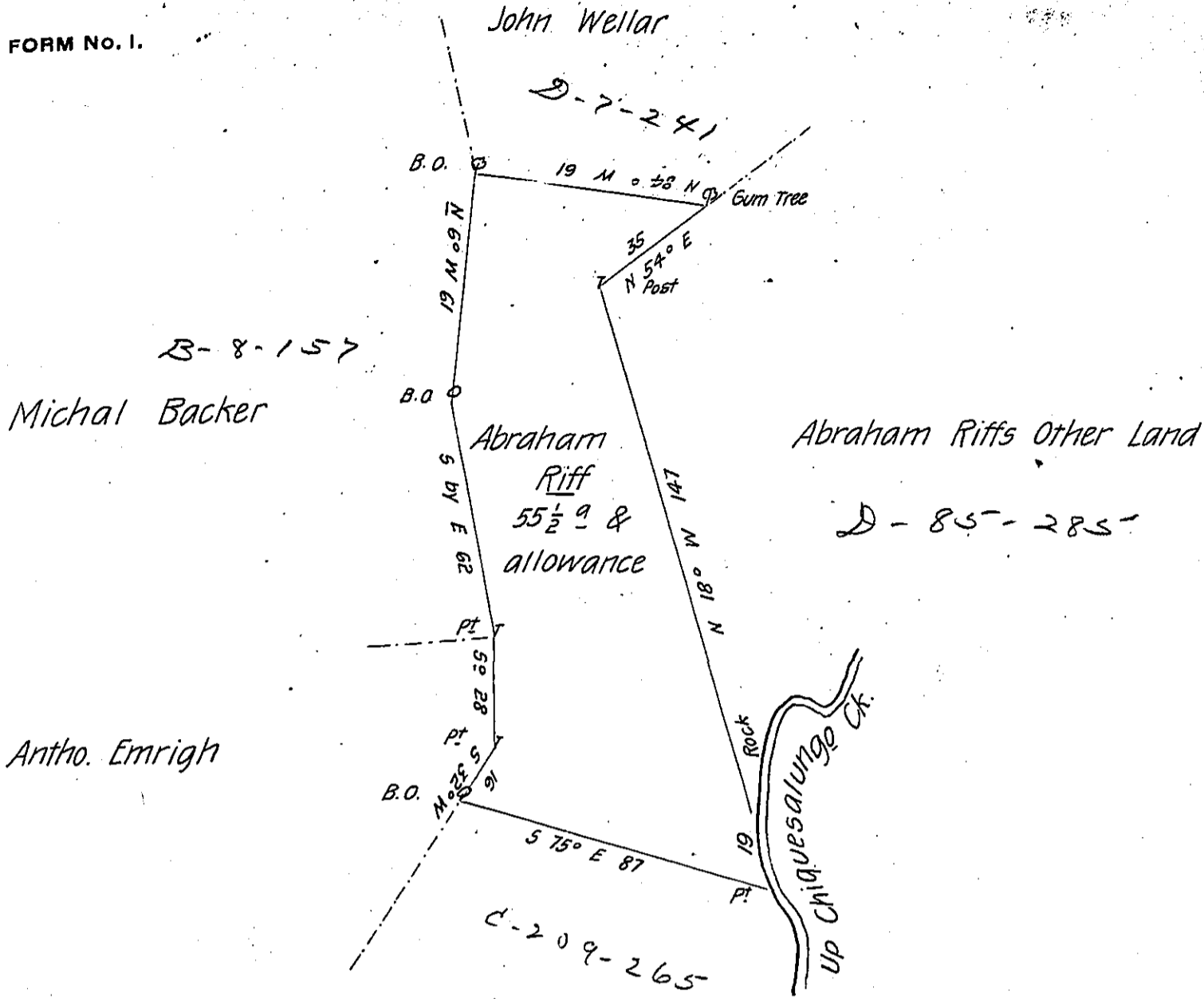


FORM NO. 1.



Survey'd to Abraham Rieff in rite of Henry Rieff on the 23^d day of February 1764 the above discribed Tract of Fifty Five & a Half Acres & the Allow^{ce} of 6 P. Ct. Situate in Rapho Town^p Lancaster County by Warrant of the 22^d december 1750

P-

Bartrem Galbraith -

To Jno. Lukens Esq^r

Surveyor Gen^l

IN TESTIMONY that the above is a copy of the original remaining on file in the Department of Internal Affairs of Pennsylvania, made conformably to an Act of Assembly approved the 16th day of February, 1833, I have hereunto set my Hand and caused the Seal of said Department to be affixed at Harrisburg, this twenty sixth day of June 1906

Loac P. Brown
 Secretary of Internal Affairs.